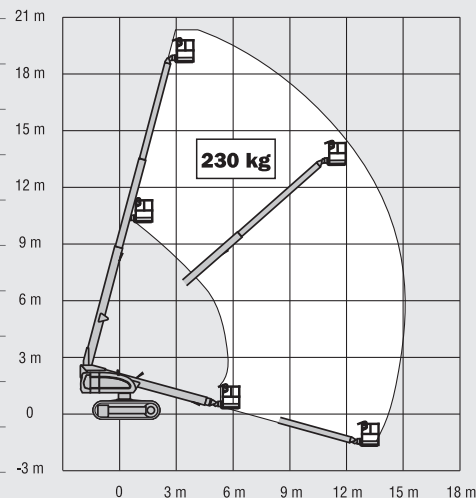


600SC

TELESCOPIC BOOM LIFTS

Platform Height	18.36 m
Horizontal Outreach	15.08 m
Swing (continuous)	360°
Platform Capacity – Unrestricted	230 kg
Platform Rotator (hydraulic)	160°
A. Platform Size	0.91 m x 1.83 m
B. Overall Width	2.49 m
C. Tailswing (working condition)	1.10 m
D. Stowed Height	2.56 m
E. Overall Length	8.51 m
F. Stowed Length	8.51 m
G. Ground Clearance	0.38 m
Machine weight ¹	10,230 kg
Maximum Ground Bearing Pressure	0.383 kg/cm ²
Drive Speed	2.6 km/h
Gradeability	55%
Turning Radius	Zero
Type of Tracks ²	Steel
Tracks Width	0.50 m
Diesel Engine -Deutz D2011L04 ³	46 kW
Fuel Tank Capacity	148 L
Hydraulic System	141 L
Auxiliary Power	12V DC

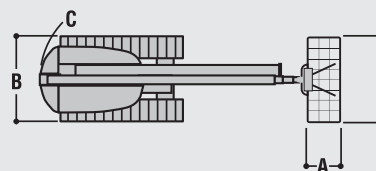
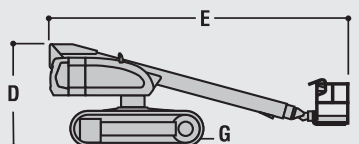


JLG Industries, Inc. is a leading designer and manufacturer of access equipment and complementary services and attachments.

JLG has manufacturing facilities in the United States, France, Romania, China and Belgium. Customers throughout Europe, Scandinavia, Africa and the Middle East benefit from a network of dedicated sales and service operations designed to deliver the highest levels of support.

JLG is an Oshkosh Corporation company.

www.jlgeurope.com



JLG is continually researching and developing products and reserves the right to make modifications without prior notice. All data in this document is indicative. Certain options or country standards will increase weight. Specifications may change to meet country standards or with the addition of optional equipment.