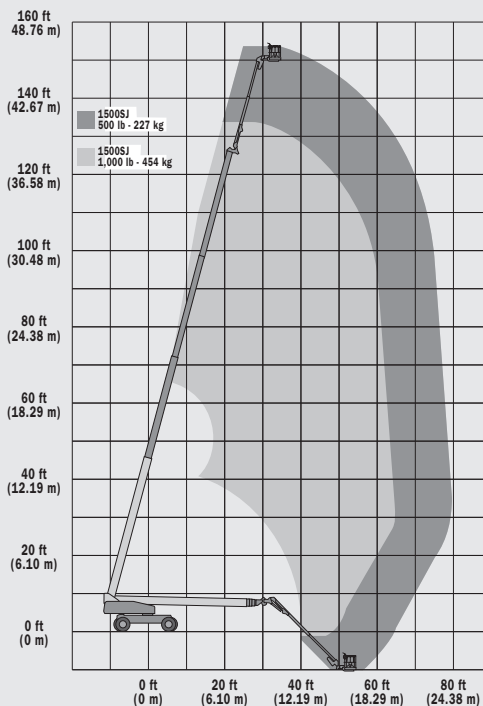


# 1500SJ

## TELESCOPIC BOOM LIFTS

Platform Height	45.72 m
Horizontal Outreach	24.38 m
Swing (Continuous)	360°
Platform Capacity – Restricted	450 kg
Platform Capacity – Unrestricted	230 kg
Platform Rotator (Hydraulic)	180°
Jib – Telescope : retracted	4.62 m
Jib – Telescope : extended	7.62 m
Jib - Range of articulation	120° Vertical (+75°/-45°)
A. Platform Size	0.91 m x 2.44 m
B. Overall Width (Axles Retracted)	2.49 m
Overall Width (Axles Extended)	3.81 m
C. Tailswing (working condition)	1.68 m
D. Stowed Height	3.05 m
E. Stowed Length	18.82 m
Transport length	13.11 m
F. Wheelbase	3.81 m
Ground Clearance	0.30 m
Machine weight <sup>1</sup>	22,000 kg
Maximum Ground Bearing Pressure	7.95 kg/cm <sup>2</sup>
Drive Speed	4.8 km/h
Gradeability	40%
Tyres	445/50D710 Foam Filled
Axle Oscillation	0.30 m
Turning Radius – Inside (Axles Retracted)	4.39 m
Turning Radius – Inside (Axles Extended)	2.44 m
Turning Radius – Outside (Axles Retracted)	6.86 m
Turning Radius – Outside (Axles Extended)	5.89 m
Diesel Engine - Deutz TD2011L04	55,9 kW
Fuel Tank Capacity	117 L
Hydraulic System	250 L
Auxiliary Power	12V DC



**JLG Industries, Inc. is a leading designer and manufacturer of access equipment and complementary services and attachments.**

JLG has manufacturing facilities in the United States, France, Romania, China and Belgium. Customers throughout Europe, Scandinavia, Africa and the Middle East benefit from a network of dedicated sales and service operations designed to deliver the highest levels of support.

**JLG is an Oshkosh Corporation company.**

**[www.jlgeurope.com](http://www.jlgeurope.com)**

<sup>1</sup> Certain options or country standards may increase weight and/or dimensions.