

Specifications*

MEASUREMENTS

Working height, max.	21,00 m
Horizontal outreach with 250 kg	12,00 m
Up and Over Clearance, max.	9,50 m
Platform height (A)	1,10 m
Platform length (B)	1,40 m
Platform width (C)	0,70 m
Length, overall (D)	6,35 m
Length without basket (E)	5,00 m
Height, travel position (F)	1,98 m
Width, minimal overall width (G)	0,98 m
Max. ground clearance (H)	0,40 m
Track (L x W) (I)	1,45 m x 0,20 m
Length outrigger footprint standard (J)	4,30 m
Width outrigger footprint standard (K)	4,30 m
Length footprint one side narrow (L)	5,90 m
Width footprint one side narrow (M)	3,35 m
Width footprint both sides narrow (N)	2,40 m
Outrigger plate Ø	0,18 m

PRODUCTIVITY

Basket capacity	250 kg
Movable Jib	-
Basket rotation	180°
Turret rotation	360°
To be jacked up on ground slope of	n/a
Height and width track adjustment**	19/46 cm
Gradeability max.	16,7°/30 %
Slope angle	19,0°/34 %
Travel speed	4,0 km/h

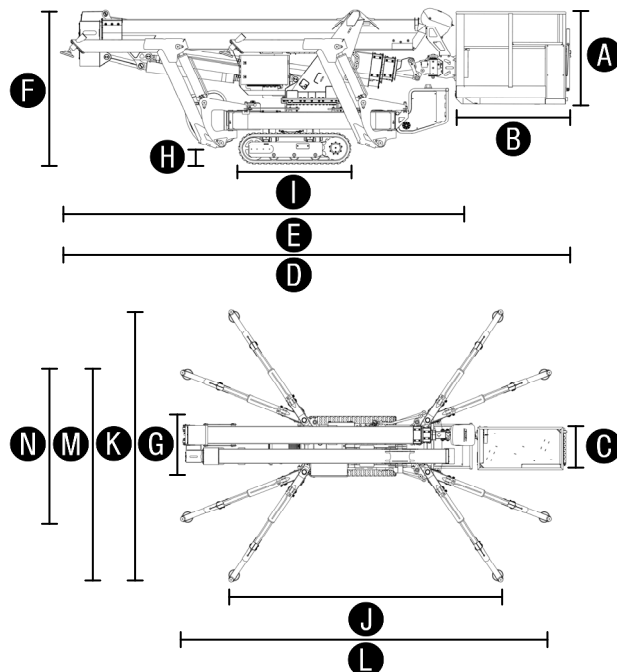
WEIGHT

Total weight	2950 kg
Live load in travelling position	4,6 kN/m²
Live load in working position	1,5 kN/m²
Max. point load per outrigger plate	23,7 kN

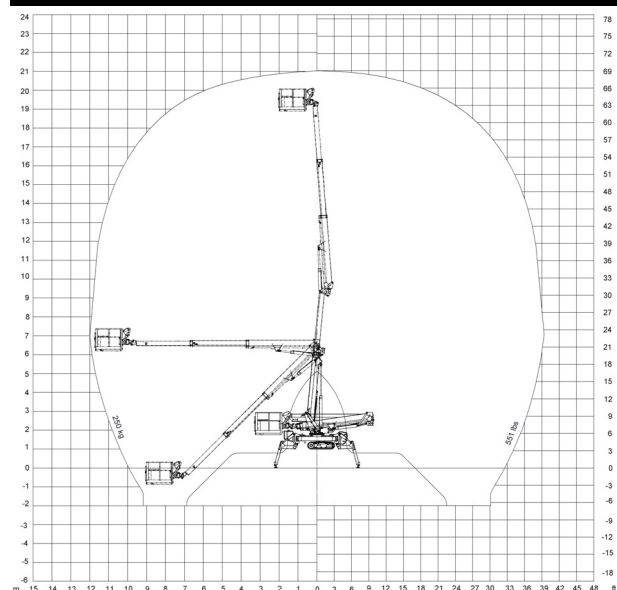
POWER

Standard power sources (Electric & combustion engine)	1) Benzin: Vanguard OHV 16 HP (11,93 kW, 16 PS) 2) Electric motor: (230 V, 12,9 A, 2,2 kW)
Optional power sources	1) Diesel: Kubota Z 602 (10,8 kW, 14,7 PS)
Fuel tank Gas engine	5,9 l
Fuel tank capacity Diesel engine	11,5 l

LEO21GT



WORKING ENVELOPE



STANDARDS COMPLIANCE



EN ISO 9001



ANSI A92.5-2006
CSA B354.1-04
EN 280:2001

Product specifications are subject to change without notice or obligation. Photographs and drawings in this document are for illustrative purposes only. Refer to the appropriate Operator's Manual for instructions on the proper use of this equipment. Failure to follow the appropriate Operator's Manual when using our equipment or to otherwise act irresponsibly may result in serious injury or death. The only warranty applicable to our equipment is the standard written warranty applicable to the particular product and sale and we make no other warranty, expressed or implied. Products and services listed may be trademarks, service marks or trade-names of Teupen Maschinenbau GmbH and/or its subsidiaries in the U.S.A. and many other countries. "Teupen", "Access redefined" and "LEO Series" are registered Trademarks of Teupen GmbH in the United States of America and many other countries. Version 2013-A © 2013 Teupen Maschinenbau GmbH.

* preliminary

** optional